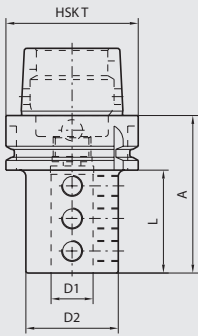


### Bohrstangenhalter

### Boring bar holder

- zum Halten von Bohrstangen
- Mitnehmernuten am HSK nach ISO 12164-3

- to clamp boring bars
- drive key way of HSK shank according to ISO 12164-3



Bestell-Nr. / Order number	HSK T	D1	D2	A	L
HA4.B06.K01.055	40	6	34	55	35
HA4.B08.K01.055	40	8	34	55	35
HA4.B10.K01.055	40	10	34	55	35
HA4.B12.K01.055	40	12	36	55	35
HA4.B16.K01.070	40	16	40	70	50
HA4.B20.K01.085	40	20	44	85	65
HA6.B06.K01.060	63	6	34	60	34
HA6.B08.K01.060	63	8	34	60	34
HA6.B10.K01.060	63	10	34	60	34
HA6.B12.K01.060	63	12	36	60	34
HA6.B16.K01.075	63	16	40	75	49
HA6.B20.K01.075	63	20	44	75	49
HA6.B25.K01.075	63	25	50	75	49
HA6.B32.K01.090	63	32	56	90	64
HA6.B40.K01.090	63	40	63	90	64
HA0.B06.K01.070	100	6	34	70	41
HA0.B08.K01.070	100	8	34	70	41
HA0.B10.K01.070	100	10	34	70	41
HA0.B12.K01.070	100	12	36	70	41
HA0.B16.K01.085	100	16	40	85	56
HA0.B20.K01.085	100	20	44	85	56
HA0.B25.K01.085	100	25	50	85	56
HA0.B32.K01.100	100	32	56	100	71
HA0.B40.K01.100	100	40	63	100	71

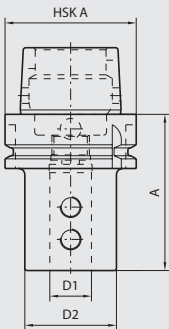


### Werkzeughalter für Wendepplattenbohrer

### Toolholder for indexable insert drills

- zum Spannen von Zylinderschäften nach DIN 6595-1

- to clamp cylindrical shanks DIN 6595-1



Bestell-Nr. / Order number	HSK A	D1	D2	A	
HA6.K20.K01.080	63	20	40	80	
HA6.K25.K01.090	63	25	45	90	
HA6.K32.K01.090	63	32	52	90	
HA6.K40.K01.105	63	40	60	105	
HA0.K20.K01.090	100	20	40	90	
HA0.K25.K01.095	100	25	45	95	
HA0.K32.K01.100	100	32	52	100	
HA0.K40.K01.110	100	40	60	110	





### Abstechhalter radial

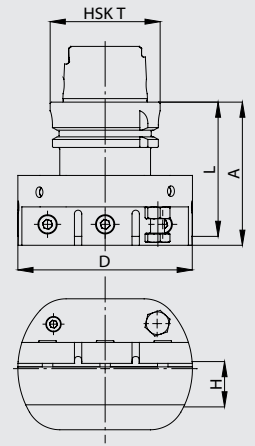
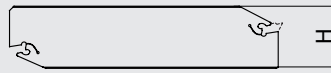
### Cut-off block radial

Bestell-Nr. / Order number	HSK T	H	A	L	ØD
HA4.AM2.K11.075	40	26	75	70	100
HA6.AM3.K11.080	63	32	80	75	100
HA0.AM3.K11.085	100	32	85	80	100

• Kühldüse beidseitig Montierbar

• the coolant nozzle is mountable double sided

Stechschwert / cut-off blade

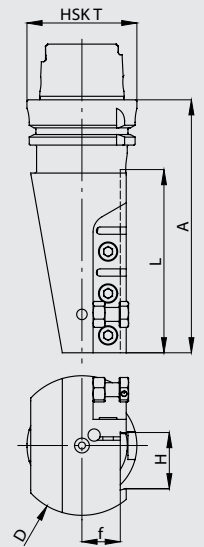
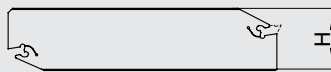


### Abstechhalter axial

### Cut-off block axial

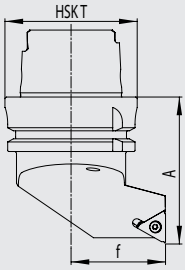
Bestell-Nr. / Order number	HSK T	f	A	H	L	ØD	rechts/links right/left
HA6.AM3.K11.145	63	22	145	32	105	80	R
HA6.AM3.K12.145	63	22	145	32	105	80	L
HA0.AM3.K11.150	100	30	150	32	105	90	R
HA0.AM3.K12.150	100	30	150	32	105	90	L

Stechschwert / cut-off blade



**Aussengewinde radial**

**External thread radial**

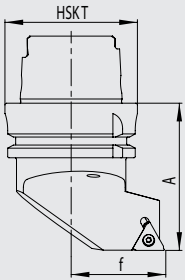


Bestell-Nr. / Order number	HSK T	f	D1 min.	A	R/L	Wendeplatte/ Insert	Ersatzteile/ Spareparts
HA4.KGB.RGR.055	40	27	-	55	R	16 ER	G01
HA4.KGB.LGR.055	40	27	-	55	L	16 EL	G02
HA6.KGB.RGR.070	63	45	-	70	R	16 ER	G01
HA6.KGB.LGR.070	63	45	-	70	L	16 EL	G02
HA0.KGB.RGR.100	100	63	-	100	R	16 ER	G01
HA0.KGB.LGR.100	100	63	-	100	L	16 EL	G02
HA0.KGC.RGR.100	100	63	-	100	R	22 ER	G05
HA0.KGC.LGR.100	100	63	-	100	L	22 EL	G06



**Aussengewinde axial**

**External thread axial**

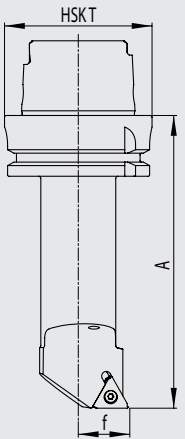


Bestell-Nr. / Order number	HSK T	f	D1 min.	A	R/L	Wendeplatte/ Insert	Ersatzteile/ Spareparts
HA4.KGB.RGA.055	40	27	-	55	R	16 EL	G03
HA4.KGB.LGA.055	40	27	-	55	L	16 ER	G04
HA6.KGB.RGA.070	63	45	-	70	R	16 EL	G03
HA6.KGB.LGA.070	63	45	-	70	L	16 ER	G04
HA0.KGB.RGA.100	100	63	-	100	R	16 EL	G03
HA0.KGB.LGA.100	100	63	-	100	L	16 ER	G04



**Innengewinde**

**Internal thread**

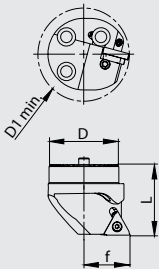


Bestell-Nr. / Order number	HSK T	f	D	D1 min.	A	L	Wendeplatte / Insert	Ersatzteile/ Spareparts
HA4.BGB.RGA.110	40	17	25	32	110	90	16 IL	G04
HA4.BGB.LGA.110	40	17	25	32	110	90	16 IR	G03
HA6.BGB.RGA.125	63	22	32	40	125	99	16 IL	G04
HA6.BGB.LGA.125	63	22	32	40	125	99	16 IR	G03
HA6.BGB.RGA.140	63	27	40	50	140	114	16 IL	G04
HA6.BGB.LGA.140	63	27	40	50	140	114	16 IR	G03
HA0.BGB.RGA.150	100	27	40	50	150	121	16 IL	G04
HA0.BGB.LGA.150	100	27	40	50	150	121	16 IR	G03



**Wechselschneidköpfe für  
Innengewinde**

**Exchangeable cutting heads for  
Internal thread**

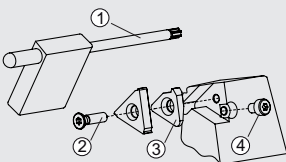


Bestell-Nr. / Order number	D	D1 min.	f	L	Wendeplatte / Insert	Ersatzteile/ Spareparts
WK3.BGB.RGA.035	25	32	17	35	16 IL	G04
WK3.BGB.LGA.035	25	32	17	35	16 IR	G03
WK2.BGB.RGA.040	32	40	22	40	16 IL	G04
WK2.BGB.LGA.040	32	40	22	40	16 IR	G03
WK1.BGB.RGA.040	40	50	27	40	16 IL	G04
WK1.BGB.LGA.040	40	50	27	40	16 IR	G03



• Bohrstangenschäfte siehe Seite 13

• Boring bar shanks page 13



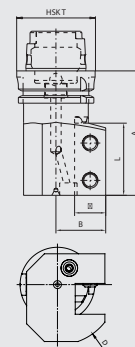
Für Gewindehalter For thread tool	Typ/ Type	Bestell-Nr. / Order number	Bestell-Nr. / Order number	Bestell-Nr. / Order number	Bestell-Nr. / Order number
		Torx-Schlüssel/ Torx driver	Torx-Schraube Torx screw	Zwischenlage/ Tip pad	Schraube/ Screw
xxx.KGB.RGR.xxx	G01	WGB.ER1.001.000	WGB.ER2.001.012	WGB.ER2.102.003	WGB.ER3.001.007
xxx.KGB.LGR.xxx	G02	WGB.ER1.001.000	WGB.ER2.001.012	WGB.ER2.101.003	WGB.ER3.001.007
xxx.xGB.RGA.xxx	G03	WGB.ER1.001.000	WGB.ER2.001.012	WGB.ER2.101.003	WGB.ER3.001.007
xxx.xGB.LGA.xxx	G04	WGB.ER1.001.000	WGB.ER2.001.012	WGB.ER2.102.003	WGB.ER3.001.007

Werkzeughalter axial

Tool holder axial



Bestell-Nr. / Order number	HSK T	B	Vierkant Square	A	L	ØD
HA4.V16.(R/L)11.080	40	30	16x16	80	40	80
HA4.V20.(R/L)11.080	40	30	20x20	80	45	80
HA6.V20.(R/L)11.090	63	30	20x20	90	45	80
HA6.V25.(R/L)11.100	63	40	25x25	100	58	102
HA0.V25.(R/L)11.125	100	50	25x25	125	80	122
HA0.V32.(R/L)11.125	100	50	32x32	125	80	122

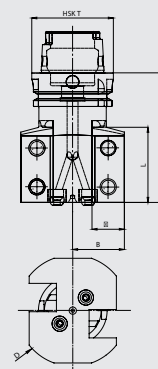


Werkzeughalter axial doppelt

Tool holder axial double

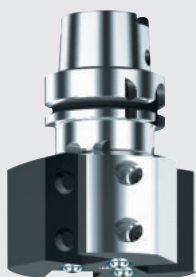


Bestell-Nr. / Order number	HSK T	B	Vierkant Square	A	L	ØD
HA4.V20.R21.080	40	30	20x20	80	45	80
HA6.V20.R21.090	63	30	20x20	90	45	80
HA6.V25.R21.100	63	40	25x25	100	58	102
HA0.V25.R21.125	100	50	25x25	125	80	122
HA0.V32.R21.125	100	50	32x32	125	80	122

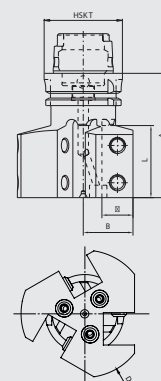


Werkzeughalter axial dreifach

Tool holder axial triple

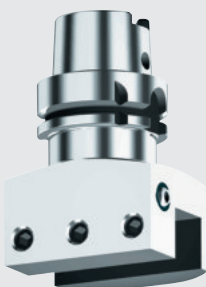


Bestell-Nr. / Order number	HSK T	B	Vierkant Square	A	L	ØD
HA6.V20.R31.090	63	30	20x20	90	45	90
HA6.V25.R31.100	63	40	25x25	100	58	102
HA0.V25.R31.125	100	50	25x25	125	80	122

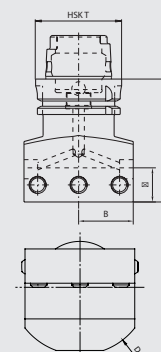


Werkzeughalter radial

Tool holder radial



Bestell-Nr. / Order number	HSK T	B	Vierkant Square	A	ØD
HA4.V20.N11.075	40	30	20x20	75	80
HA6.V20.N11.090	63	30	20x20	90	80
HA6.V25.N11.090	63	40	25x25	90	102
HA0.V25.N11.100	100	50	25x25	100	122
HA0.V32.N11.100	100	50	32x32	100	122

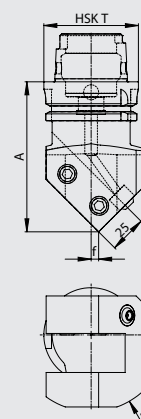


Werkzeughalter diagonal 45°

Tool holder diagonal 45°



Bestell-Nr. / Order number	HSK T	f	Vierkant Square	A	ØD
HA4.V20.R12.080	40	5	20x20	80	80
HA4.V20.L12.080	40	5	20x20	80	80
HA6.V20.R12.100	63	5	20x20	100	80
HA6.V20.L12.100	63	5	20x20	100	80
HA6.V25.R12.100	63	5	25x25	100	102
HA6.V25.L12.100	63	5	25x25	100	102
HA0.V25.R12.125	100	5	25x25	125	122
HA0.V25.L12.125	100	5	25x25	125	122

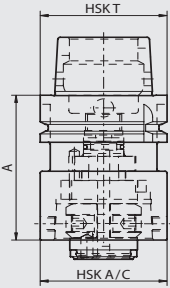


### HSK-Verlängerung

- Mitnehmernuten am HSK nach ISO 12164-3

### HSK-Extension

- drive key way of HSK shank according to ISO 12164-3



Bestell-Nr. / Order number	HSK T	HSK A/C	A
HA4.HA4.K01.060	40	40	60
HA4.HA4.K01.080	40	40	80
HA6.HA6.K01.080	63	63	80
HA6.HA6.K01.120	63	63	120
HA0.HA0.K01.125	100	100	125
HA0.HA0.K01.160	100	100	160
HA0.HA0.K01.200	100	100	200

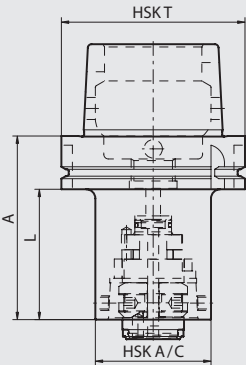


### HSK-Reduktion

- Mitnehmernuten am HSK nach ISO 12164-3

### HSK-Reduction

- drive key way of HSK shank according to ISO 12164-3



Bestell-Nr. / Order number	HSK T	HSK A/C	A	L
HA6.HA4.K01.070	63	40	70	44
HA0.HA4.K01.080	100	40	80	51
HA0.HA6.K01.100	100	63	100	71

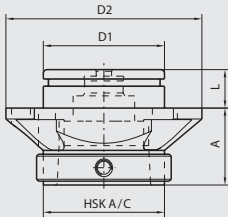


### Spanneinheit HSK

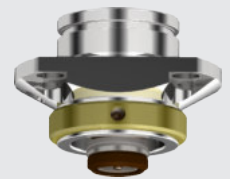
- zur Montage in Revolver oder Revolveraufbauten
- Spitzenhöhe einstellbar über Excenter
- innere Kühlmitteldurchführung

### Clamping unit HSK

- for use in turret or clamping unit holder
- center height adjustable with an excenter
- inner coolant supply

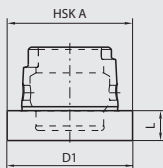


Bestell-Nr. / Order number	HSK A/C	D1	D2	A	L
U40.HA4.001.025	40	40	68	25	17
U63.HA6.001.040	63	63	102	40	20
U10.HA0.001.060	100	100	165	60	30



### Trennstellenverschluss

### Blanking plug



Bestell-Nr. / Order number	HSK A	D1	L
HA4.000.001.020	40	40	20
HA6.000.001.026	63	63	26
HA0.000.001.029	100	100	29



### Rohling

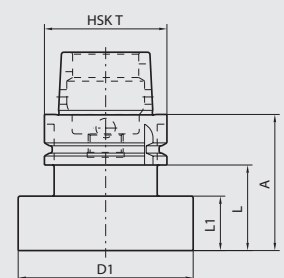
- HSK-T / ISO 12164-3
- Einsatzgehärtet 48HRc / 0.8mm tief

### Blank

- HSK-T / ISO 12164-3
- case-hardened 48HRc depth 0.8mm

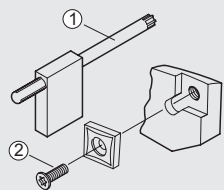


Bestell-Nr. / Order number	HSK T	D1	A	L	L1
HA4.Ro4.001.055	40	54	55	35	20
HA6.Ro5.001.100	63	52	100	-	58
HA6.Ro9.001.070	63	90	70	44	28
HA6.Ro6.001.200	63	63	200	174	158
HA0.Ro8.001.125	100	87	125	-	80
HA0.Ro0.001.090	100	130	90	61	45
HA0.Ro0.001.250	100	100	250	221	205

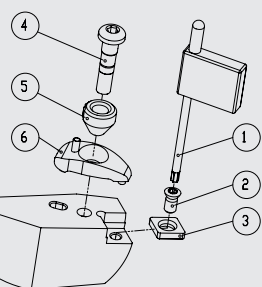


Ersatzteile / Zubehör

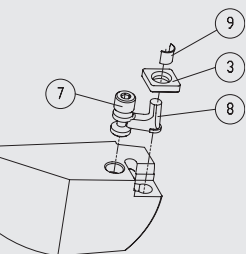
Spare parts / Accessories



Für Klemmhalter/ Bohrstange For turning tool/ boring bar	Typ/ Type	Bestell-Nr. / Order number <sup>①</sup>	Bestell-Nr. / Order number <sup>②</sup>
		Torx-Schlüssel/ Torx driver	Torx-Schraube Torx screw
xxx.xCC.xxx.xxx	S01	WCC.ER1.001.000	WCC.ER2.001.010
xxx.xCD.xxx.xxx	S02	WCC.ER1.001.000	WCC.ER2.001.010
xxx.xCE.xxx.xxx	S03	WCE.ER1.001.000	WCE.ER2.001.012
xxx.xWE.xxx.xxx	S04	WCC.ER1.001.000	WCC.ER2.001.010
xxx.xDB.xxx.xxx	S05	WCB.ER1.001.000	WCB.ER2.001.009
xxx.xDF.xxx.xxx	S06	WCC.ER1.001.000	WCC.ER2.001.010
xxx.xVF/VB.xxx.xxx	S07	WCB.ER1.001.000	WCB.ER2.001.009
xxx.xVD.xxx.xxx	S08	WCB.ER1.001.000	WCB.ER2.001.009
xxx.xSB.xxx.xxx	S09	WCC.ER1.001.000	WCC.ER2.001.010
xxx.xVE/VA.xxx.xxx	S10	WCA.ER1.001.000	WCA.ER2.001.006



Für Klemmhalter/ Bohrstange For turning tool/ boring bar	Typ/ Type	Bestell-Nr. / Order number <sup>③</sup>	Bestell-Nr. / Order number <sup>④</sup>	Bestell-Nr. / Order number <sup>⑤</sup>	Bestell-Nr. / Order number <sup>⑥</sup>
		Zwischenlage/ Tip pad	Spannschraube/ Clamping screw	Düsenring/ Nozzle ring	Spannpratze/ Clamping short
xxx.xCD.xxx.xxx	D01	WCD.ER2.101.003	WCC.ER4.103.032	WCC.ER5.102.012	WCC.ER3.102.024
xxx.KCE.R/Lxx.xxx	D02	WCE.ER2.101.004	WCC.ER4.103.032	WCC.ER5.102.012	WCC.ER3.102.024
xxx.KCE.Nxx.xxx	D03	WCE.ER2.101.004	WCC.ER4.103.032	WCC.ER5.102.012	WCC.ER3.102.029
xxx.KWE.R/Lxx.xxx	D04	WWE.ER2.101.004	WCC.ER4.103.032	WCC.ER5.102.012	WCC.ER3.102.024
xxx.xDF.R/Lxx.xxx	D05	WDF.ER2.101.003	WCC.ER4.103.032	WCC.ER5.102.012	WCC.ER3.102.024
xxx.KDF.Nxx.xxx	D06	WDF.ER2.101.003	WCC.ER4.103.032	WCC.ER5.102.012	WCC.ER3.102.029
xxx.xVD.R/Lxx.xxx	D07	WVD.ER2.101.003	WCC.ER4.103.032	WCC.ER5.102.012	WCC.ER3.102.024
xxx.KVD.Nxx.xxx	D08	WVD.ER2.101.003	WCC.ER4.103.032	WCC.ER5.102.012	WCC.ER3.102.029
xxx.KSD.R/Lxx.xxx	D09	WSD.ER2.101.003	WCC.ER4.103.032	WCC.ER5.102.012	WCC.ER3.102.024



Für Klemmhalter/ Bohrstange For turning tool/ boring bar	Typ/ Type	Bestell-Nr. / Order number <sup>③</sup>	Bestell-Nr. / Order number <sup>⑦</sup>	Bestell-Nr. / Order number <sup>⑧</sup>	Bestell-Nr. / Order number <sup>⑨</sup>
		Zwischenlage/ Tip pad	Spannschraube/ Clamping screw	Kniehebel/ Lever	Rohrstift/ Hollow pin
xxx.PCD.xxx.xxx	P01	WCD.ER2.101.003	WCD.ER4.101.017	WCD.ER3.101.000	WCD.ER1.101.000
xxx.PCE.R/Lxx.xxx	P02	WCE.ER2.101.004	WCE.ER4.101.004	WCE.ER3.101.000	WCE.ER1.101.000
xxx.PCE.Nxx.xxx	P03	WCE.ER2.101.004	WCE.ER4.101.004	WCE.ER3.101.000	WCE.ER1.101.000
xxx.PWE.R/Lxx.xxx	P04	WWE.ER2.101.004	WCD.ER4.101.017	WDF.ER3.101.000	WCD.ER1.101.000
xxx.PDF.R/Lxx.xxx	P05	WDF.ER2.101.003	WCD.ER4.101.017	WDF.ER3.101.000	WCD.ER1.101.000
xxx.PDF.Nxx.xxx	P06	WDF.ER2.101.003	WCD.ER4.101.017	WDF.ER3.101.000	WCD.ER1.101.000
xxx.PSD.R/Lxx.xxx	P07	WSD.ER2.101.003	WCD.ER4.101.017	WCD.ER3.101.000	WCD.ER1.101.000
xxx.PDE.xxx.xxx.xxx	P08	WDE.ER2.101.003	WDE.ER4.101.017	WDE.ER3.101.000	WDE.ER1.101.000
xxx.PCF.xxx.xxx	P09	WCF.ER2.101.000	WCF.ER4.101.027	WCF.ER3.101.000	WCF.ER1.101.000
xxx.PSE.xxx.xxx	P10	WSE.ER2.101.004	WCE.ER4.101.004	WCE.ER3.101.000	WCE.ER1.101.000

Für Werkzeughalter/  
Für Bohrstangenhalter  
For tool holder/  
For boring bar holder

Bestell-Nr. /  
Order number

	Klemmschraube/ Clamping screw	Dimension
xxx.V20.xxx.xxx	ERU.GS6.001.018	M10 x 18
xxx.V25.xxx.xxx	ERU.GS7.001.025	M12 x 25
xxx.B06.xxx.xxx	ERU.GS4.001.010	M 6 x 10
xxx.B08...B12.xxx.xxx	ERU.GS5.001.010	M 8 x 10
xxx.B16...B40.xxx.xxx	ERU.GS6.001.012	M10 x 12

Für HSK /  
For HSK

Bestell-Nr. /  
Order number

Bestell-Nr. /  
Order number

Bestell-Nr. /  
Order number

	Spannpatrone / Clamping cartridge	Verschlusschraube / Drive bolt	Dichtring / Sealing ring
xxx.HA4.xxx.xxx	HA4.ER1.001.000	HA4.ER2.001.005	HA4.ER4.004.006
xxx.HA6.xxx.xxx	HA6.ER1.001.000	HA6.ER2.001.007	HA6.ER4.004.008
xxx.HA0.xxx.xxx	HA0.ER1.001.000	HA0.ER2.001.000	HA0.ER4.004.010